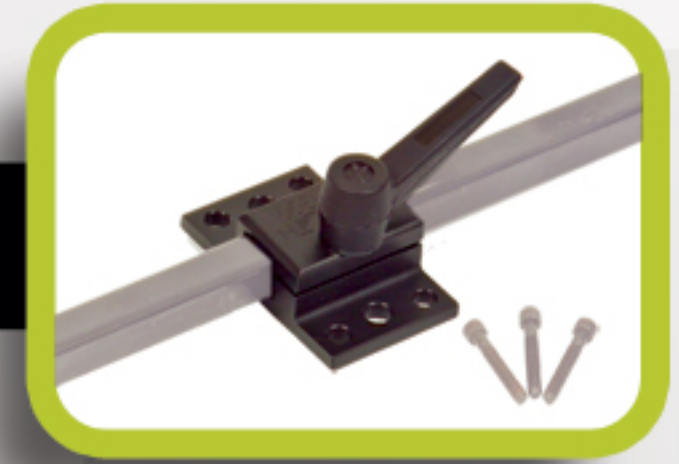


# 100 - 900 Series PARTS

**ASL 606SBM**

Seat Back Mount for Multi Axis Adjustable Headrest Mounting Hardware



**ASL 622**

Stealth Link Adjustable Removable Headrest Mounting Hardware \* Must Specify Headrest



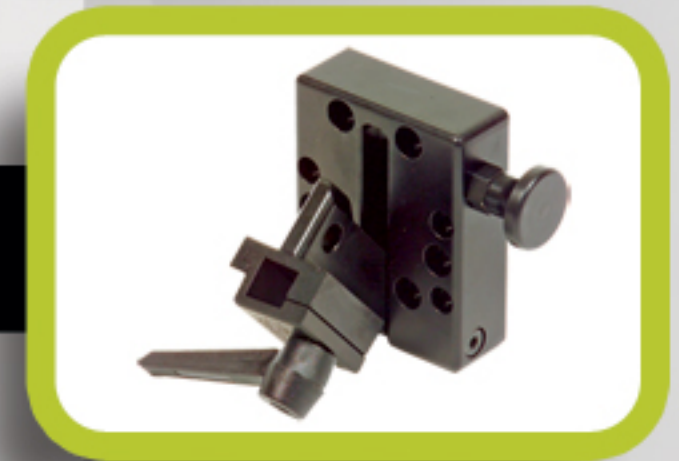
**ASL 622F**

Stealth Flip Down Headrest Mounting Bracket for Link Hardware \* Must Specify Headrest



**ASL 617**

Flip Down Headrest Mounting Bracket



**ASL 612**

Single Lock Multi Positional Hinge



**ASL 614**

Protective Covering for Electronics



*Reset Switch Mounting Components*

**ASL 605B**

Mounting Bracket for Adjustable Beam Switch



# 100 - 900 Series PARTS

**ASL 913L**

Swing Away Mechanism - Left  
\* Must Specify Switch Mount



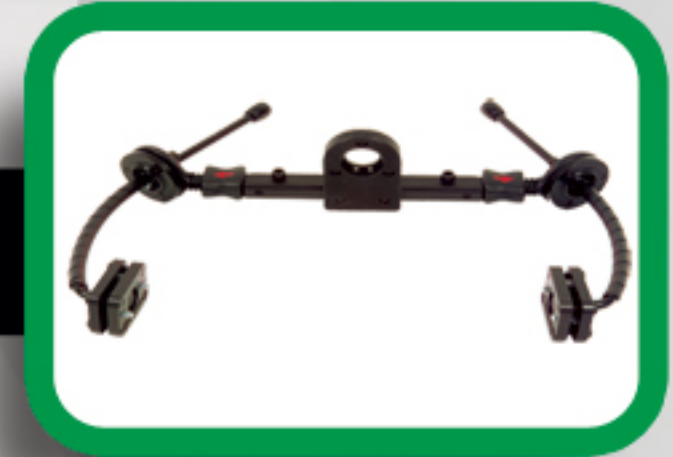
**ASL 913R**

Swing Away Mechanism - Right  
\* Must Specify Switch Mount



**ASL 913B**

Swing Away Mechanism - Both  
\* Must Specify Switch Mount



**ASL 914**

Adjustable Flexible Swing Away Mechanism



**ASL 300R**

Egg Switch Finger Ring Mount



**ASL 611**

Arm Rest Switch Mounting Bracket



## *Sensors and Tray Components*

**ASL 106DMK6i**

Demo Cable with 4 ASL  
204 Proximity Sensors  
for MK6i Electronics

